



CITY ENGINEER'S OFFICE

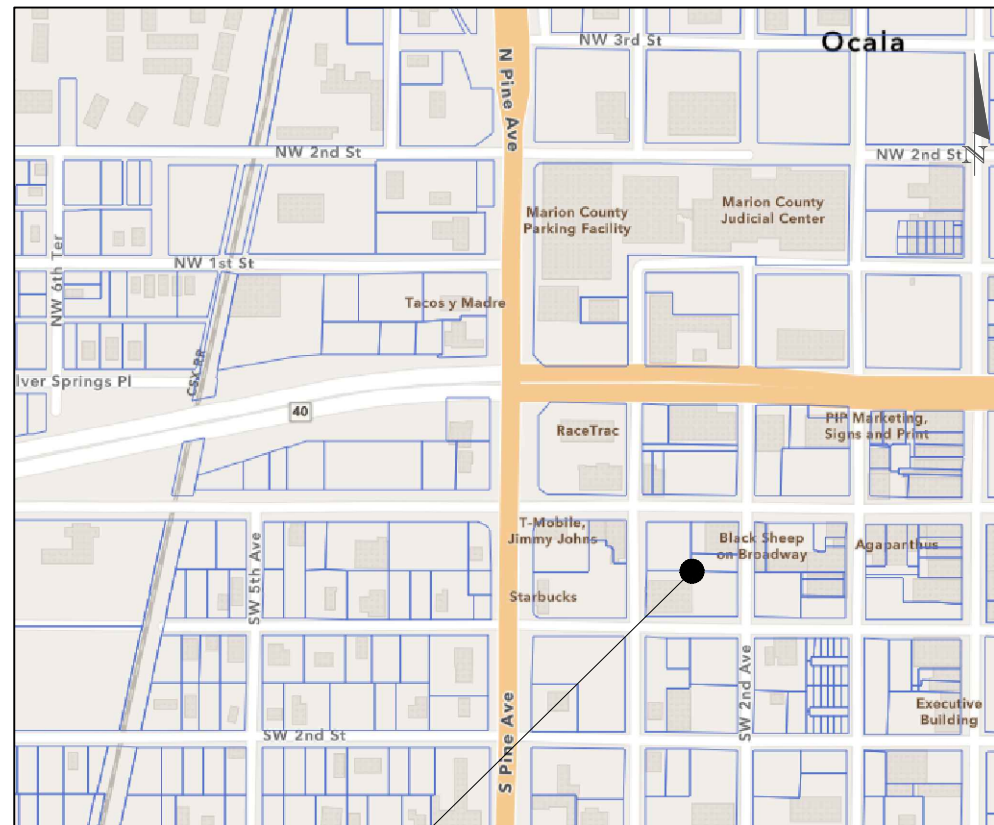
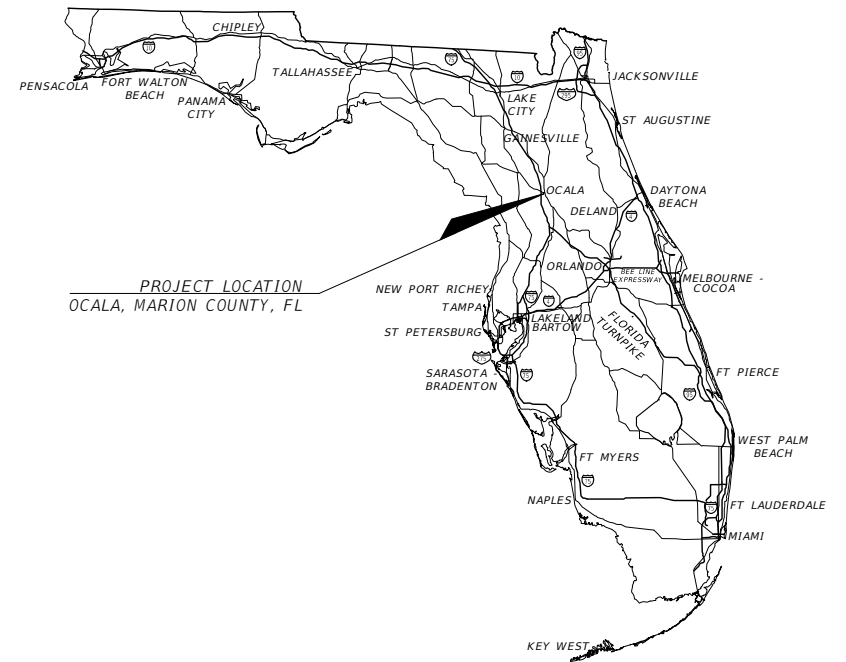
CONTRACT PLANS

ITB NO. CIP/241097

PARKING GARAGE #2 CONSTRUCTION SITE BUILDING DEMOLITION

100% PLANS

FOR CONSTRUCTION
DATE: 9/30/2024



PROJECT LOCATION
PARCEL ID#: 2853-026-004, 2853-026-003, 2853-027-005

UTILITY COMPANY	PHONE NUMBER	EMERGENCY
OCALA PUBLIC WORKS (TRAFFIC)	(352) 351-6733	
OCALA ELECTRIC UTILITY	(352) 351-6650	(352) 351-6666 (LEAVE MESSAGE)
OCALA WATER RESOURCES	(352) 351-6772	(352) 351-6775
COX COMMUNICATIONS	(888) 269-9693	
CENTURYLINK	(352) 368-8817	
TECO GAS	(352) 622-0112	(352) 622-0111

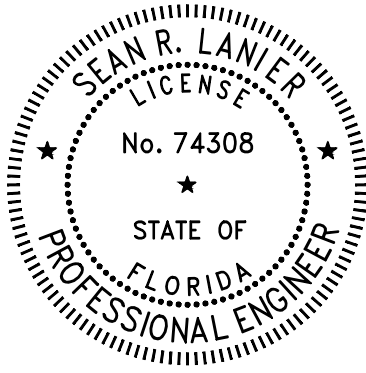
SHEET NO.	SHEET DESCRIPTION
1	KEY SHEET
2	SIGNATURE SHEET
3	GENERAL NOTES
4	PLAN VIEW
5-6	DEMOLITION PLAN
7	DEMOLITION NOTES - FIGURE SHEET
8-10	PHOTOS
11	DETAILS



REVISIONS		DESCRIPTION		PREPARED BY	PROJECT NO. 24315	SHEET NO.
DATE	DESCRIPTION	DATE	DESCRIPTION	OCALA CITY ENGINEER'S OFFICE	PROJECT NAME: PARKING GARAGE #2 SITE DEMOLITION	
----	----			James D. Vidican	KEY SHEET	1

SEAN R. LANIER
P.E. LICENSE NUMBER 74308
CITY OF OCALA, FLORIDA
1805 NE 30TH AVENUE
OCALA, FLORIDA 34470





CITY OF OCALA
 CITY ENGINEER'S OFFICE
 1805 NE 30TH AVE., BLDG. 300
 OCALA, FL 34470

THE ABOVE NAMED PROFESSIONAL ENGINEER SHALL BE RESPONSIBLE FOR THE FOLLOWING SHEETS IN ACCORDANCE WITH RULE 61G15-23.004, F.A.C.

PLAN INDEX

- KEY SHEET
- SIGNATURE SHEET
- GENERAL NOTES
- PLAN VIEW
- DEMOLITION PLAN
- DEMOLITION NOTES - FIGURE SHEET
- PHOTOS
- DETAILS

REVISIONS				SEAN R. LANIER P.E. LICENSE NUMBER 74308 CITY OF OCALA, FLORIDA 1805 NE 30TH AVENUE OCALA, FLORIDA 34470	PREPARED BY	PROJECT NO. 24315	SHEET NO.
DATE	DESCRIPTION	DATE	DESCRIPTION		PROJECT NAME: PARKING GARAGE #2 SITE DEMOLITION		
----	----				<i>SIGNATURE SHEET</i>	2	

GENERAL NOTES:

- ALL CONSTRUCTION TO BE IN ACCORDANCE WITH THE CITY OF OCALA STANDARD SPECIFICATIONS VOLUME I, "GENERAL CONDITIONS FOR CONSTRUCTION" AND FLORIDA DEPARTMENT OF TRANSPORTATION "STANDARD SPECIFICATION FOR ROAD & BRIDGE CONSTRUCTION" (LATEST EDITION), AND VOLUME III, "STANDARD SPECIFICATIONS FOR WATER & SEWER CONSTRUCTION".
- CONTRACTOR SHALL PROVIDE ACCESS TO ALL RESIDENCES AND BUSINESSES DURING THE ENTIRE CONSTRUCTION PERIOD.
- IF ANY SIGNS ARE REMOVED OR RELOCATED, THE CONTRACTOR AT THE PROPER HEIGHT AND DISTANCE SHALL REINSTALL THEM IMMEDIATELY.
- NOTIFICATION AND M.O.T. PLAN SHALL BE SUBMITTED FOR APPROVAL BEFORE STARTING CONSTRUCTION. M.O.T. PLAN SHALL COMPLY WITH INDEX NO. 600 IN THE FLORIDA DEPARTMENT OF TRANSPORTATION "DESIGN STANDARDS" LATEST EDITION.
- THE CONTRACTOR SHALL SEED DISTURBED AREAS AFFECTED BY THEIR WORK AS DIRECTED BY THE ENGINEER WITH A GRASS TYPE THAT MATCHES EXISTING SEED. IN AREAS WHERE THERE IS NOT AN ESTABLISHED GRASS TYPE BAHIA SHALL BE USED.
- CONTRACTOR TO PROVIDE TWO PORTABLE PROJECT SIGNS (AS SPECIFIED IN CONTRACT DOCUMENTS) TO BE RELOCATED AS PROJECT PROGRESSES AT LOCATIONS APPROVED BY CITY'S INSPECTOR.

ENVIRONMENTAL NOTES:

NOTICE TO CONTRACTORS:

THE CONTRACTOR IS RESPONSIBLE FOR OBTAINING ASBESTOS FDEP PERMIT. THE CITY OF OCALA OPERATES UNDER A FDEP NPDES 'GENERAL PERMIT' THAT REQUIRES THE CITY AND, IN TURN, ITS CONTRACTORS TO FOLLOW CERTAIN ENVIRONMENTAL PRACTICES AND PROCEDURES TO PREVENT THE POLLUTION OF THE CITY'S GROUNDWATER AND STORMWATER SYSTEM.

EROSION & SEDIMENT CONTROLS - STABILIZATION PRACTICES:

CONTRACTOR SHALL:

- LIMIT AREAS OF DISTURBANCE TO ONLY THAT REQUIRED FOR NEAR TERM CONSTRUCTION ACTIVITIES.
- PROMPTLY INSTALL PERMANENT SEED ON ALL AREAS DISTURBED BY CONSTRUCTION AS WORK IS COMPLETED.
- TEMPORARILY STABILIZE ALL WORK AREAS THAT CANNOT BE PERMANENTLY SODDED WITH ACCEPTABLE METHODS SUCH AS HAY BALES, STRAW MULCH, ETC., OR AS MAY BE APPROVED BY THE CITY.

EROSION & SEDIMENT CONTROLS - STRUCTURAL PRACTICES:

CONTRACTOR SHALL:

- HAVE READILY AVAILABLE AND PROMPTLY INSTALL AS NEEDED OR AS DIRECTED BY THE CITY:
 - 'SILT FENCE' (CITY STANDARD OR FDOT INDEX 102 TYPE III FENCE).
 - 'STORM INLET PROTECTION' (ACF ENVIR. 'GUTTERBUDDY' OR 'GUTTERGATOR', OR EQUIVALENT).
 - 'FLOATING TURBIDITY BARRIER' (FDOT INDEX 103).
 - 'TEMPORARY CONSTRUCTION GRAVEL ENTRANCE' (CITY STANDARD OR FDOT INDEX 106).
 - 'CONSTRUCTION BARRIER FENCE' (CITY STANDARD).

- REGULARLY REMOVE ACCUMULATED SEDIMENT FROM STREET SURFACES/GUTTERS, SWALES AND STORM INLETS.

- DANDY BAG - INSTALLATION: REMOVE THE GRATE FROM THE CATCH BASIN. IF USING OPTIONAL OIL ABSORBENTS; PLACE ABSORBENT PILLOW IN UNIT. STAND THE GRATE ON END. MOVE THE TOP LIFTING STRAPS OUT OF THE WAY AND PLACE THE GRATE INTO THE DANDY BAG II SO THAT THE GRATE IS BELOW THE TOP STRAPS AND ABOVE THE LOWER STRAPS. HOLDING THE LIFTING DEVICES, INSERT THE GRATE INTO THE INLET.

- DANDY BAG - MAINTENANCE: REMOVE ALL ACCUMULATED SEDIMENT AND DEBRIS FROM VICINITY OF UNIT AFTER EACH STORM EVENT. AFTER EACH STORM EVENT AND AT REGULAR INTERVALS, LOOK INTO THE DANDY BAG II. IF THE CONTAINMENT AREA IS MORE THAN 1/3 FULL OF SEDIMENT, THE UNIT MUST BE EMPTIED. TO EMPTY UNIT, LIFT THE UNIT OUT OF THE INLET USING THE LIFTING STRAPS AND REMOVE THE GRATE. IF USING OPTIONAL OIL ABSORBENTS; REPLACE ABSORBENT WHEN NEAR SATURATION.

HAZARDOUS, SANITARY AND CONSTRUCTION WASTE MATERIALS:

CONTRACTOR SHALL:

- HANDLE, COLLECT AND DISPOSE OF HAZARDOUS MATERIALS, SANITARY WASTE AND CONSTRUCTION WASTE MATERIALS ACCORDING TO THE APPLICABLE STATE LAWS AND REGULATIONS, CITY ORDINANCES, OR AS DIRECTED BY THE CITY.
- DESIGNATE AN AREA FOR DISCHARGE OF SURPLUS CONCRETE AND CONCRETE TRUCK DRUM WASH WATER. INSTALL A CONTAINMENT BERM AROUND THIS DESIGNATED AREA TO PREVENT RUNOFF BEYOND THE DESIGNATED AREA. ALL SURPLUS CONCRETE SHALL BE REMOVED FROM THE PROJECT SITE PRIOR TO FINAL INSPECTION.

SPILL PREVENTION AND SPILL ('RELEASE') CONTROL PRACTICES:

CONTRACTOR SHALL:

- STORE AND USE PETROLEUM AND OTHER HAZARDOUS PRODUCTS ACCORDING TO RECOMMENDED PROCEDURES.
- FOLLOW GOOD HOUSEKEEPING PRACTICES TO MINIMIZE THE RISK OF SPILLS OR UNINTENDED EXPOSURE OF PETROLEUM AND OTHER HAZARDOUS MATERIALS TO STORMWATER RUNOFF OR SEEPAGE INTO THE GROUNDWATER.
- HAVE PRE-PREPARED PROCEDURES CLEARLY POSTED FOR SPILL CONTAINMENT AND CLEAN-UP.
- HAVE READILY AVAILABLE REMEDIATION MATERIALS FOR SPILL CONTAINMENT AND CLEAN-UP.
- UPON RELEASE, IMMEDIATELY INITIATE RECOMMENDED METHODS FOR SPILL CONTAINMENT AND CLEAN-UP.
- WITHIN 24-HOURS OF THE SPILL/RELEASE, NOTIFY THE 'STATE WATCH OFFICE' (AT 1.800.320.0519 OR 1.850.815.4001) OF ALL RELEASES EQUAL TO OR EXCEEDING THE REPORTABLE QUANTITY.

LEGEND			
//////	demolition limits	w3	no. 3 water (non-potable)
//////	silt fence	oh/e	over head electric
		utc	underground telephone cable
		fm	force main
_____	proposed fence	wm	water main
- x - - - - x - - -	existing fence	ce	concrete encased conduit
_____ or - - - -	existing structure, utility, etc.	db	direct buried conduit
⊕00.00	spot elevation	dip	ductile iron pipe
⊕	existing valve	cip	cast iron pipe
⊕	existing power pole	n.t.s.	not to scale
☆	existing light pole	p.i.d.	parcel id
⊕	existing fire hydrant	d.e.p.	department of environmental protection
⊗	existing in ground utility access		

REVISIONS				SEAN R. LANIER P.E. LICENSE NUMBER 74308 CITY OF OCALA, FLORIDA 1805 NE 30TH AVENUE OCALA, FLORIDA 34470	PREPARED BY OCALA CITY ENGINEER'S OFFICE	PROJECT NO. 24315 PROJECT NAME: PARKING GARAGE #2 SITE DEMOLITION	SHEET NO. GENERAL NOTES
DATE	DESCRIPTION	DATE	DESCRIPTION				
----	----						3

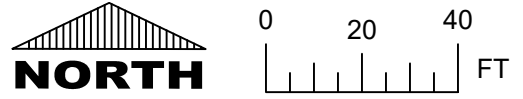


REVISIONS				SEAN R. LANIER P.E. LICENSE NUMBER 74308 CITY OF OCALA, FLORIDA 1805 NE 30TH AVENUE OCALA, FLORIDA 34470		PROJECT NO. 24315 PROJECT NAME: PARKING GARAGE #2 SITE DEMOLITION	SHEET NO.
DATE	DESCRIPTION	DATE	DESCRIPTION				
----	----					<i>PLAN VIEW</i>	4



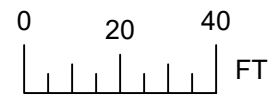
SCOPE OF WORK

- (A) LIMIT OF DEMOLITION/LIMIT OF SILT FENCE
- (B) DEMOLISH & REMOVE 206 SW DROADWAY BUILDING
- (C) DEMOLISH & REMOVE 555 SW 3rd AVE BUILDING
- (D) TEMPORARY SINGLE LANE/FULL ROAD CLOSURE AS APPROPRIATE FOR ADJACENT DEMO ACTIVITIES, FOLLOW APPROPRIATE FDOT INDEX FOR MAINTENANCE OF TRAFFIC, PER APPROVED ROW PERMIT.
- (E) SIDEWALK CLOSURE/DETOUR. FOLLOW FDOT INDEX FOR MAINTENANCE OF TRAFFIC, PER APPROVED ROW PERMIT.
- (F) DISCONNECT & REMOVE ELECTRIC METER & OVERHEAD ELECTRIC SERVICE DROP
- (G) DISCONNECT & REMOVE CABLE, TELEPHONE & OTHER MISC OVERHEAD SERVICE DROPS.
- (H) DISCONNECT & REMOVE OUTSIDE A/C COMPRESSOR UNITS.
- (I) REMOVE CHURCH SIGN.
- (J) REMOVE & PRESERVE STAINED GLASS WINDOW. DELIVER TO LOCATION DESIGNATED BY CITY.
- (K) REMOVE & PRESERVE HISTORICAL MARKER/PLOAQUE. DELIVER TO LOCATION DESIGNATED BY CITY.
- (L) DEMO & REMOVE UTILITY POLE AFTER POWER DISCONNECTED.
- (M) REMOVE MAILBOX & POST.
- (N) DEMOLISH & REMOVE RAMP/STAIRS RAILINGS.
- (O) DEMOLISH & REMOVE STAIRS PLANTER & RAILINGS.
- (P) REMOVE WATER METER & INSTALL CURB STOP ON EXISTING SERVICE LINE.
- (R) SIDEWALK WITH MEMORIAL PLAQUES TO REMAIN IN PLACE.



MATCH LINE
(SEE SHEET 5)

REVISIONS				SEAN R. LANIER P.E. LICENSE NUMBER 74308 CITY OF OCALA, FLORIDA 1805 NE 30TH AVENUE OCALA, FLORIDA 34470	PREPARED BY OCALA CITY ENGINEER'S OFFICE	PROJECT NO. 24315		SHEET NO. 5
DATE	DESCRIPTION	DATE	DESCRIPTION			PROJECT NAME: PARKING GARAGE #2 SITE DEMOLITION		
----	----	----	----			<i>DEMO PLAN</i>		



(SEE SHEET 4)
MATCH LINE



SCOPE OF WORK

- Ⓐ LIMITS OF DEMOLITION/LIMITS OF SILT FENCE
- Ⓑ DEMOLISH & REMOVE 123 SW 3rd AVE
- Ⓒ TEMP SINGLE LANE/FULL ROAD CLOSURE AS APPROPRIATE FOR DEMO OPERATIONS. USE CORRECT FDOT INDEX MOT AS PER APPROVED ROW PERMIT.
- Ⓓ DISCONNECT & REMOVE ELECTRIC METER & OVERHEAD SERVICE DROP.
- Ⓔ DISCONNECT & REMOVE CABLE, TELEPHONE & OTHER MISC OVERHEAD SERVICE DROP.
- Ⓕ REMOVE SIGN.
- Ⓖ DISCONNECT & REMOVE OUTSIDE A/C COMPRESSOR UNIT & BOLLARDS.
- Ⓗ DEMOLISH & REMOVE EXISTING 4' CHAIN LINK FENCE.
- Ⓘ DEMOLISH & REMOVE RAMP/SIDEWALK RAILING.
- Ⓙ REMOVE SIGN POST & SIGN.
- Ⓚ DEMOLISH & REMOVE PORCH STOOP.
- Ⓛ REMOVE WATER METER & INSTALL CURB STOP ON EXISTING SERVICE LINE.


REVISIONS				SEAN R. LANIER P.E. LICENSE NUMBER 74308 CITY OF OCALA, FLORIDA 1805 NE 30TH AVENUE OCALA, FLORIDA 34470		PROJECT NO. 24315		SHEET NO.
DATE	DESCRIPTION	DATE	DESCRIPTION			PROJECT NAME: PARKING GARAGE #2 SITE DEMOLITION		
----	----					<i>DEMO PLAN</i>		6

DEMOLITION NOTES

1. DEMOLITION IS FOR THE EXISTING ITEMS (MAINLY ABOVE GROUND) WITHIN DEMOLITION LIMITS.
2. "DEMOLITION ITEM" SHALL REFER TO ANY EXISTING STRUCTURE OR COMPONENT THAT IS TO BE REMOVED.
3. "REMOVE" SHALL REFER TO THE DEMOLITION (OR DISMANTLING) AND REMOVAL OF ANY DEMOLITION ITEM (OR UTILITY) AND THE HAULING AWAY OF MATERIALS, BY THE CONTRACTOR, TO THE APPROPRIATE DESTINATIONS.
4. THE EXISTING TEMPORARY FENCE IS TO REMAIN IN PLACE DURING AND AFTER THE DEMOLITION PHASE.
5. CONSTRUCTION EQUIPMENT MUST MAINTAIN A MINIMUM APPROACH DISTANCE OF 20' FROM ANY OVERHEAD POWER LINES.
6. ALL ELECTRICAL POWER SUPPLY TO THE DEMOLITION LIMITS IS TO BE PROPERLY DISCONNECTED BY THE CITY OF OCALA BEFORE THE ACTUAL DEMOLITION BEGINS.
7. ALL IN GROUND PULL BOXES (ELECTRICAL VAULTS) ARE TO REMAIN.
8. UNDERGROUND UTILITIES THAT ARE TO BE ABANDONED SHALL REMAIN IN PLACE (TO BE COORDINATED WITH CITY OF OCALA, ENGINEERING & WATER RESOURCES) HOWEVER, ALL EXISTING FUNCTIONAL WATER MAINS, THAT ARE CONNECTED TO THE DEMOLITION ITEMS, ARE TO BE:
 - 8.1. CAPPED AT THE NECESSARY AREAS WHERE DISCONNECTION IS MADE,
 - 8.2. PRESSURE TESTED TO ENSURE THAT THERE ARE NO LEAKS,
 - 8.3. AND WHERE THERE IS A GAP CAUSED BY THE DEMOLITION, SIMILAR ADDITIONAL MATERIAL IS TO BE ADDED, SO THAT THE PIPE NETWORK LOOP IS CLOSED AS NECESSARY.
9. ABOVEGROUND UTILITIES, IF APPLICABLE, ARE TO BE REMOVED TO A DEPTH OF 4' BELOW GRADE (MAX.) AND CAPPED AS NECESSARY.
10. ALL ATTACHMENTS, OF A DEMOLITION ITEM, ARE TO BE REMOVED.
 - 10.1. ATTACHMENTS INCLUDE, BUT ARE NOT LIMITED TO, SUPPORTING STRUCTURES AND ITEMS THAT ARE LOCATED WITHIN, OR IMMEDIATELY ATTACHED TO, A DEMOLITION ITEM.
11. REMOVE ALL LIGHT POLES WITHIN DEMOLITION LIMITS.
12. REMOVE ALL TREES WITHIN DEMOLITION LIMITS.
13. ALL MATERIALS LISTED IN THE "SCOPE OF WORK" SHOULD BE CONSIDERED ASSUMED. MAY NOT INCLUDE ALL MATERIALS PRESENT IN STRUCTURES, ONLY THE BULK OF MATERIALS PRESENT.
14. ALL ENVIRONMENTALLY HAZARDOUS MATERIALS, IF FOUND, ARE TO BE APPROPRIATELY DISPOSED OF SO THAT THEY DO NOT POSE ANY THREAT TO THE ENVIRONMENT.
15. ALL DEMOLITION ITEMS, IF APPLICABLE, ARE TO BE REMOVED 4' BELOW GRADE (MAX.) AND WHAT REMAINS IS TO BE BROKEN UP TO MEET FLORIDA D.E.P. STANDARDS AS STATED IN THE 'D.E.P. WWTF ABANDONMENT REQUIREMENTS':
16. LEVEL WORK AREA AS NECESSARY. BACK FILL, WITH DIRT, ALL VOIDS CREATED BY THE DEMOLITION. USE CLEAN FILL (FREE DRAINING).
17. TO KEEP STORM WATER RUNOFF FLOWING ACROSS AND TO THE PROPER DESTINATION, RETURN ALL DISTURBED AREAS TO GRADE. THE CITY WOULD PREFER THAT THE FULL EXTENT OF THE DEMOLITION LIMITS BE GRADED TO BEST MATCH THE IMMEDIATE SURROUNDING AREA AND/OR THE ELEVATION OF THE EXISTING PARKING AREA (ITEM S ON SHEET 4).
18. SEED, AS NECESSARY, ALL DISTURBED AREAS.

DISCLAIMER

This information provided was derived from documents in the possession of the City of Ocala that are readily available. All existing underground utilities should be considered assumed. No warranties, expressed or implied, are provided as to the accuracy of the underground data herein & should be verified to determine exact location.

REVISIONS				SEAN R. LANIER P.E. LICENSE NUMBER 74308 CITY OF OCALA, FLORIDA 1805 NE 30TH AVENUE OCALA, FLORIDA 34470		PROJECT NO. 24315	SHEET NO.
DATE	DESCRIPTION	DATE	DESCRIPTION			PROJECT NAME: PARKING GARAGE #2 SITE DEMOLITION	
----	----					<i>DEMO NOTES</i>	7

PARCEL #2853-026-004 / 206 SW BROADWAY



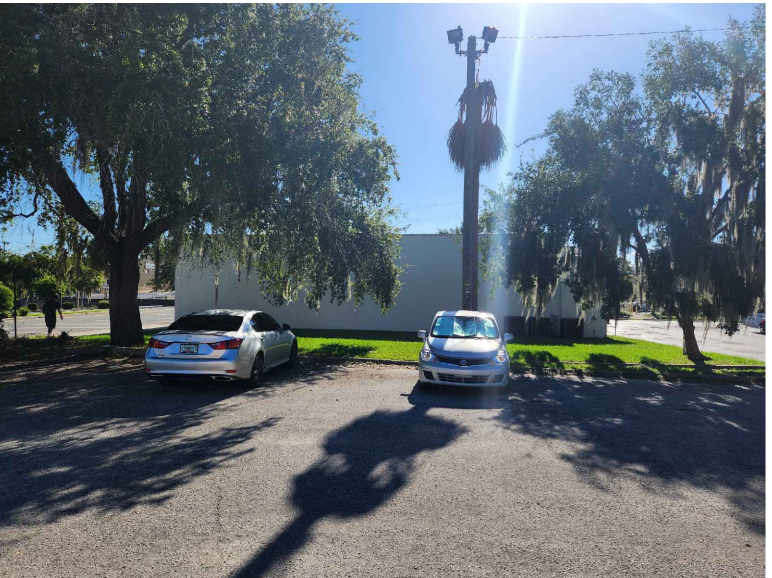
NORTH



EAST



SOUTH



WEST

REVISIONS				SEAN R. LANIER P.E. LICENSE NUMBER 74308 CITY OF OCALA, FLORIDA 1805 NE 30TH AVENUE OCALA, FLORIDA 34470		PROJECT NO. 24315	SHEET NO.
DATE	DESCRIPTION	DATE	DESCRIPTION			PROJECT NAME: PARKING GARAGE #2 SITE DEMOLITION	
----	----					<i>PHOTOS</i>	8

PARCEL #2853-026-003 / 55 SW 3rd AVE



NORTH



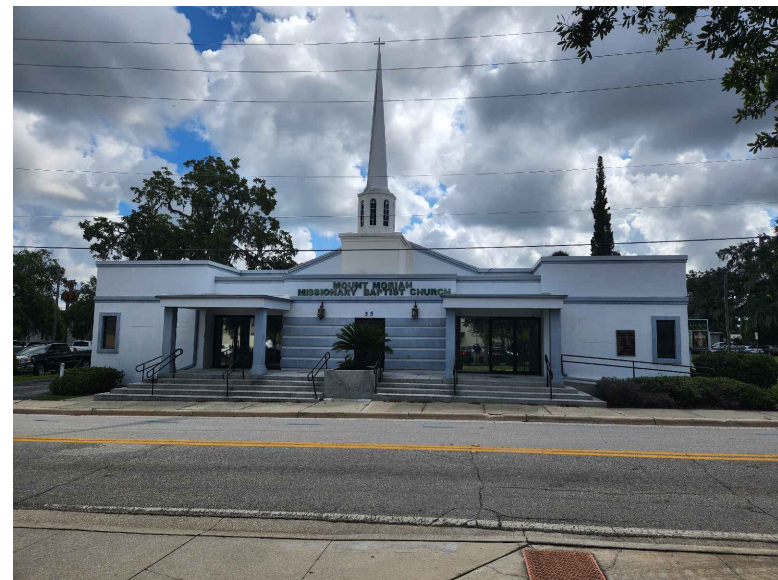
STAINED GLASS TO BE REMOVED & PRESERVED

EAST

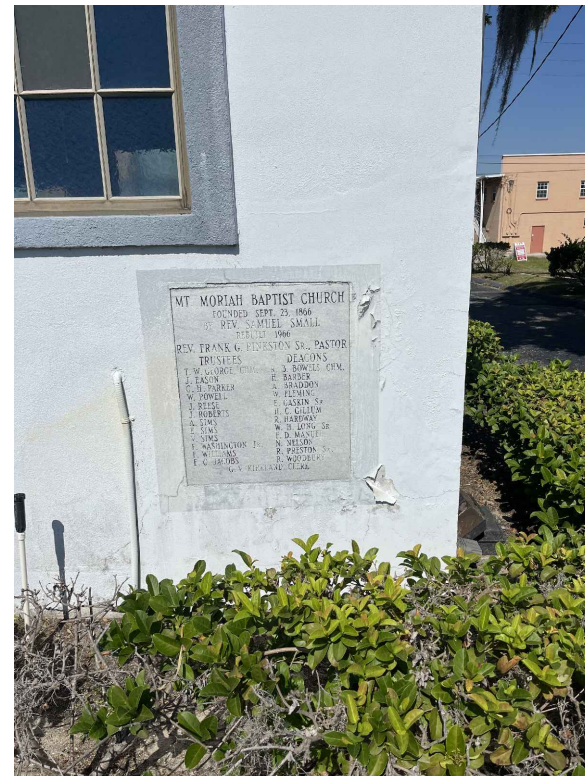
HISTORICAL PLAQUE TO BE REMOVED & PRESERVED



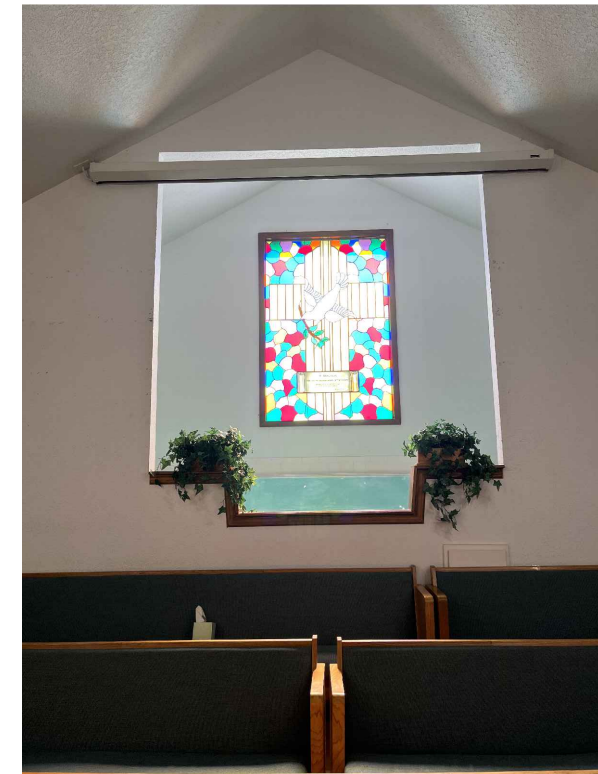
SOUTH



WEST



HISTORICAL PLAQUE TO BE PRESERVED, REMOVED, & DELIVERED TO THE CITY OF OCALA



STAINED GLASS TO BE PRESERVED, REMOVED, & DELIVERED TO THE CITY OF OCALA

REVISIONS		SEAN R. LANIER P.E. LICENSE NUMBER 74308 CITY OF OCALA, FLORIDA 1805 NE 30TH AVENUE OCALA, FLORIDA 34470		PREPARED BY	PROJECT NO. 24315	SHEET NO.
DATE	DESCRIPTION	DATE	DESCRIPTION	OCALA CITY ENGINEER'S OFFICE	PROJECT NAME: PARKING GARAGE #2 SITE DEMOLITION	
----	----				<i>PHOTOS</i>	9

PARCEL #2853-027-005 / 123 SW 3rd AVE
(DEDUCTIVE ALTERNATE)



NORTH




EAST

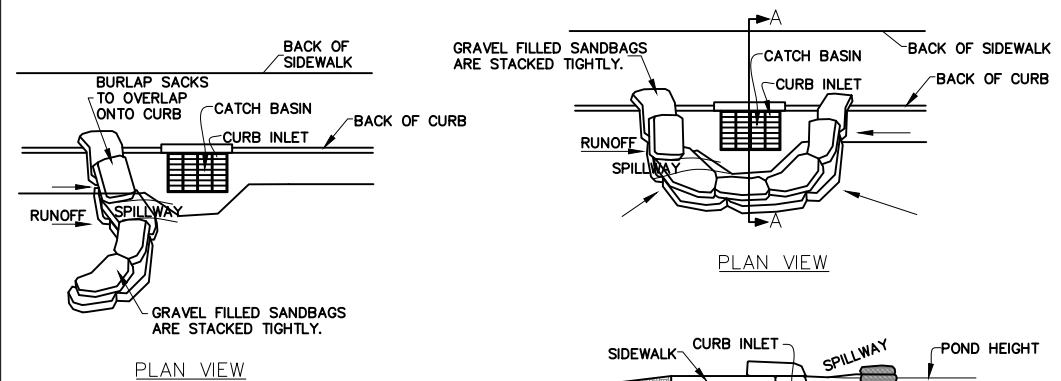


SOUTH



WEST

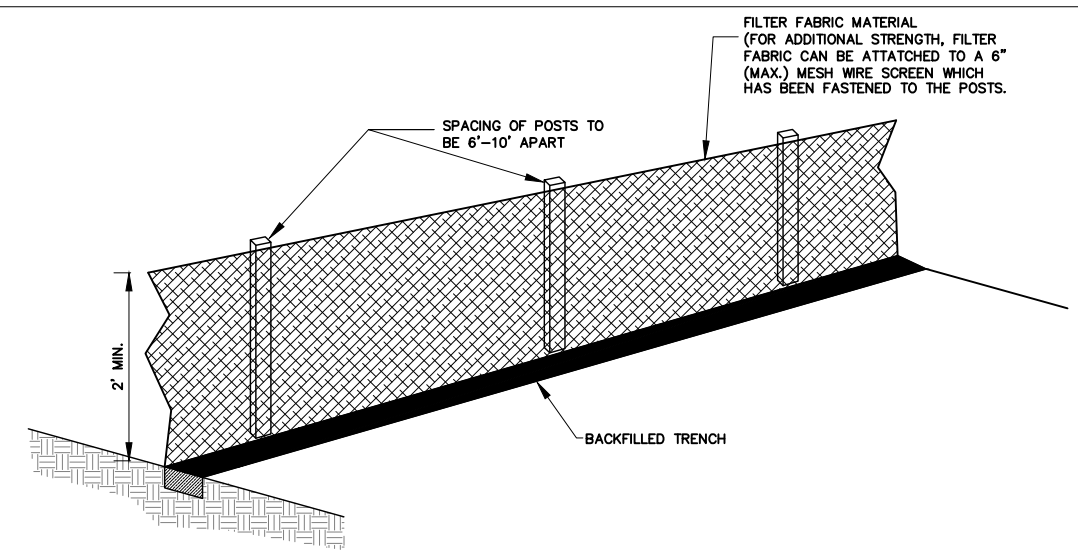
REVISIONS				SEAN R. LANIER P.E. LICENSE NUMBER 74308 CITY OF OCALA, FLORIDA 1805 NE 30TH AVENUE OCALA, FLORIDA 34470	PREPARED BY	PROJECT NO. 24315	SHEET NO.
DATE	DESCRIPTION	DATE	DESCRIPTION		PROJECT NAME: PARKING GARAGE #2 SITE DEMOLITION		
----	----						<i>PHOTOS</i>



- NOTES.**
1. PLACE CURB TYPE SEDIMENT BARRIERS ON GENTLY SLOPING STREET SEDIMENTS WHERE WATER CAN POND AND ALLOW SEDIMENT TO SEPARATE FROM RUNOFF.
 2. SANDBAGS, OF EITHER BURLAP OR WOVEN GEOTEXTILE FABRIC, ARE FILLED WITH GRAVEL, LAYERED AND PACKED TIGHTLY.
 3. LEAVE ONE SANDBAG GAP IN THE TOP ROW TO PROVIDE A SPILLWAY FOR OVERFLOW.
 4. INSPECT BARRIERS AND REMOVE SEDIMENT AFTER EACH STORM EVENT. SEDIMENT AND GRAVEL MUST BE REMOVED FROM THE TRAVELED WAY IMMEDIATELY.

SECTION A-A
CURB INLET SEDIMENT BARRIER

- CURB AND GUTTER SEDIMENT BARRIER**
1. PLACE GRAVEL FILLED BURLAP BAGS ON GENTLY SLOPING STREET SEGMENTS ACCORDING TO THE SPACING CHART. (SEE PLATE 4.08p)
 2. PLACE TWO OR MORE BAGS AT EACH INTERVAL IN A MANNER WHICH PROVIDES MAXIMUM SUPPORT.
 3. WHEN STACKING SEVERAL BAGS HIGH, LEAVE A ONE BAG GAP TO PROVIDE AN OVERFLOW SPILLWAY. (SEE PLATE 4.08q)
 4. SEDIMENTS MUST BE REMOVED AFTER EACH RAIN EVENT.
- MAINTENANCE**
1. THE STRUCTURE SHALL BE INSPECTED AFTER EACH RAIN AND REPAIR MADE AS NEEDED.
 2. SEDIMENT SHALL BE REMOVED AND THE TRAP RESTORED TO ITS ORIGINAL DIMENSIONS WHEN THE SEDIMENT HAS TO $\frac{1}{4}$ OF THE DESIGN DEPTH OF THE TRAP. REMOVED SEDIMENT SHALL BE DEPOSITED IN A SUITABLE AREA AND IN SUCH A MANNER THAT IT WILL NOT ERODE.
 3. STRUCTURES SHALL BE REMOVED AND THE AREA STABILIZED WHEN THE REMAINING DRAINAGE AREA HAS BEEN PROPERLY STABILIZED.



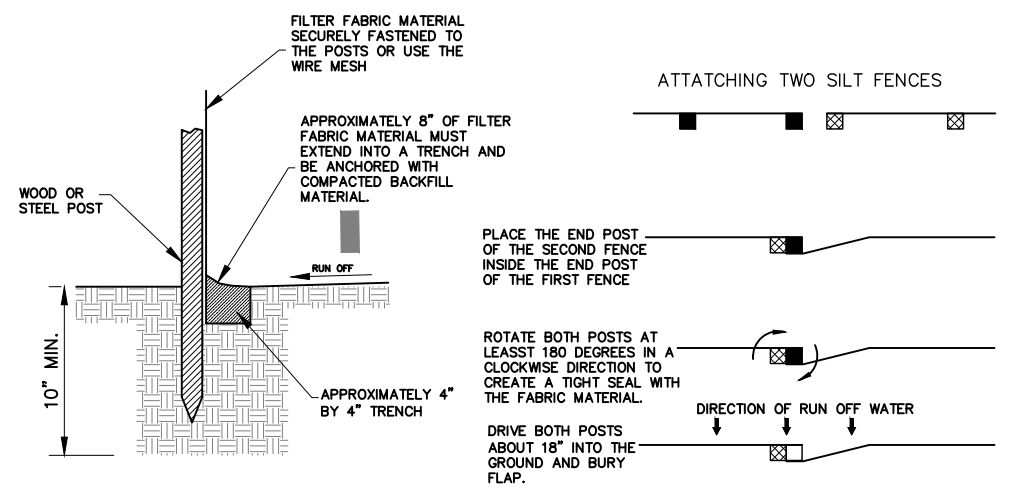
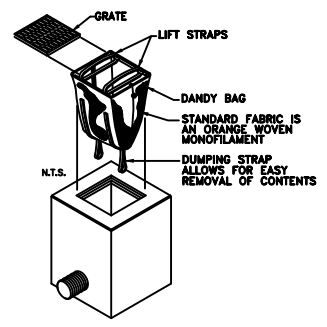
DANDY BAG DETAIL

- SWPPP NOTES:**
1. SOIL TRACKING PREVENTION DEVICE (STPD) AT SITE ENTRANCE FOR CONSTRUCTION TRAFFIC SHALL BE INSTALLED IN ACCORDANCE WITH THE FLORIDA DEPARTMENT OF TRANSPORTATION DESIGN STANDARDS INDEX 106, SHOWN ON THIS SHEET FOR REFERENCE. INSTALL STPD PRIOR TO HEAVY CONSTRUCTION TRAFFIC. STPD TO BE REMOVED JUST PRIOR TO LIMEROCK INSTALLATION.
 2. A PRESITE MEETING IS REQUIRED PRIOR TO CONSTRUCTION.

DANDY BAG II
Installation and Maintenance Guidelines

INSTALLATION: REMOVE THE GRATE FROM CATCH BASIN. IF USING OPTIONAL OIL ABSORBENTS; PLACE ABSORBENT PILLOW IN UNIT. STAND THE GRATE ON END. MOVE THE TOP LIFTING STRAPS OUT OF THE WAY AND PLACE THE GRATE INTO THE DANDY BAG II SO THAT THE GRATE IS BELOW THE TOP STRAPS AND ABOVE THE LOWER STRAPS. HOLDING THE LIFTING DEVICES, INSERT THE GRATE INTO THE INLET.

MAINTENANCE: REMOVE ALL ACCUMULATED SEDIMENT AND DEBRIS FROM VICINITY OF UNIT AFTER EACH STORM EVENT. AFTER EACH STORM EVENT AND AT REGULAR INTERVALS, LOOK INTO THE DANDY BAG II. IF THE CONTAINMENT AREA IS MORE THAN 1/3 FULL OF SEDIMENT, THE UNIT MUST BE EMPTIED. TO EMPTY UNIT, LIFT THE UNIT OUT OF THE INLET USING THE LIFTING STRAPS AND REMOVE THE GRATE. IF USING OPTIONAL OIL ABSORBENTS; REPLACE ABSORBENT WHEN NEAR SATURATION.



TYP. SILT FENCE DETAILS

REVISIONS				SEAN R. LANIER P.E. LICENSE NUMBER 74308 CITY OF OCALA, FLORIDA 1805 NE 30TH AVENUE OCALA, FLORIDA 34470	PREPARED BY OCALA CITY ENGINEER'S OFFICE	PROJECT NO. 24315 PROJECT NAME: PARKING GARAGE #2 SITE DEMOLITION	SHEET NO. 11
DATE	DESCRIPTION	DATE	DESCRIPTION				
----	----	----	----			DETAILS	